

The  
Newsletter  
of the  
Saline  
United  
Methodist  
Church

Pastor: Dr. James E. Tuttle

Phone: (734) 429-4730  
Fax: (734) 429-3500  
Email: [office@fumc-saline.org](mailto:office@fumc-saline.org)  
Website: [www.fumc-saline.org](http://www.fumc-saline.org)

Traditional Worship 9:00 a.m.  
Sunday School 10:10 a.m.  
Contemporary Worship 11:15 a.m.

*Summer Worship Hours:*  
Right Start 8:04 a.m.  
Summer Worship 9:30 a.m.



September 18, 2005

“Ringing Forth the Good News”

### **Pam Heffelbower Named as New Church Custodian**

The Staff-Parish Committee voted this past Monday evening to invite Pam Heffelbower on staff to assume the position of Church Custodian, the position that Leanne Rimnac held prior to her reassignment to become our Director of Children’s Ministry. We deeply appreciate Laura Speiran adding to her already full plate of duties by taking on the custodian work in the interim. Pam began her new position Tuesday, September 13<sup>th</sup>.

On her first day as staff, Pam began her duties working alongside of Kenneth Braithwaite refurbishing the main entrance doors leading into the narthex. Kenneth is a resident of Grenada since moving there from Guyana in 1989. An electrical contractor by trade, Kenneth worked closely with members of our International Mission Team this past July when our team members traveled to the island to help with repairs resulting from hurricane damage. When Kenneth knew that he would be in the United States visiting with some of his family, he called Mike and Paulette Suchy indicating that he hoped to come and visit Saline with the expressed purpose of doing something to say thanks to those who traveled to his home and worked on their church building. Mr. Braithwaite will also be helping out in some other ways during his stay with us. We deeply appreciate his generous gift of time to us and Pam’s working with him on a couple of these much-needed projects.

From a pool of ten very capable individuals, Pam was recommended for the position. She brings to the staff an extensive involvement in the life of our congregation as well as a thorough knowledge of both the original building as well as the new educational addition, having served on the building committee. She resonates a solid faith commitment to Christ, a vibrant spirit, a caring personality and a willingness to tackle and accomplish a variety of tasks around this place. Many of us have been blessed over and over again by her “coming to our rescue” and offering her time and energy when a job needed doing.

As I have mentioned on so many occasions, First UMC of Saline is blessed with a marvelous staff. I’m absolutely sure that is a key ingredient to the growth of membership and expanded ministry and outreach that we are experiencing as a church. God has intricately led so many gifted people to give leadership to our congregation. Pam’s presence is one more indication of that divine leading. We welcome Pam to the team and look forward to the many, many ways that she will enhance the ministry through the extended use of this building.

Someone commented to Debbie Bates, our Staff-Parish Chairperson that what they appreciated about Leanne’s work was that she clearly “loved God’s house,” and that they hoped that the person replacing her would have the same commitment. Pam, I’m convinced, is one that loves God’s house, loves God’s people and loves the work of God’s Kingdom that’s being accomplished by the people for First United Methodist Church of Saline.

*Pam, we joyfully welcome you as you begin this new venture in ministry as part of the staff of our church.*

– Pastor Jim

# UMW News

## UMW Unit Meeting

The UMW will hold a Unit Meeting in Room C on Tuesday, September 20<sup>th</sup> at 7:00 p.m. Guest speakers Dr. Joseph and Mrs. Joanne Perez will present a program on Cuba. Russelle Low is in charge of the devotions. Doris Sekerka and Janet Moss are co-hostesses. **Reminder:** Please remember to bring to the meeting any items you have collected for the District In-Gathering. Items being collected are pop-tabs (for Ronald McDonald House), fitted or flat single sheets and single blankets (for homeless shelters in Wayne, Macomb and Oakland counties), and feminine hygiene products (for women's shelters and Red Bird Mission in Kentucky). A collection basket will be located in the Narthex.

## Hannah

Hannah Circle will meet on Monday, October 3<sup>rd</sup> at 9:30 a.m. in the Fellowship Hall to make Christmas ornaments for the Gift of Hope project. Refreshments will be provided by Janet Moss. We will also have an additional workday to finish the ornaments on Monday, October 10<sup>th</sup> at 9:30 a.m. Childcare is available. Please call Sylvia Korte at 517-423-7881 with questions.

## Esther

Esther Circle will meet on Monday, October 3<sup>rd</sup> at 1:00 p.m. at the home of Carolyn Beal. Joanie Quinn will be co-hostess. You are encouraged to bring a sandwich and arrive at 12:30 p.m. for fellowship and a light lunch. The devotions will be presented by Carolyn Comfort. Please contact Kay Richmond at 944-6234 for more information.

## Ruth

Ruth Circle will meet on Tuesday, October 4<sup>th</sup> at 1:00 p.m. in the Parlor. You are encouraged to bring a sandwich and arrive at 12:30 p.m. for fellowship and a light lunch. Mary Domeier is hostess and Virginia Carr is co-hostess. The program will be presented by Florrie Belt. Please call Florence Busch at 547-9377 for further information.

## MORNING PRAYER CHAIN

Just a note to remind or inform our congregation about our confidential prayer help through our Morning Prayer Chains. We begin our prayers at 7:00 a.m. any day of the week. Contact Jan Geer, 429-5019 or Lisa Marshall in the church office, 429-4730 with any request or prayers. Our chain can use more members. Call Jan Geer for more information. ***Prayer makes a difference!***



## PLAYGROUP AT FUMC SALINE

Friday mornings

10:00 – 11:30 a.m. in the church nursery  
Babies, Toddlers, Preschoolers  
and their parents/caregivers are all invited!  
Open to anyone that wants to get together,  
make new friends and play!

Contact Susie Loughner  
for more information at 429-2202

## DEADLINES

The next Steeple News deadline is Monday, **September 26<sup>th</sup>** at noon. Volunteers are needed to assemble the newsletter **Thursday, September 29<sup>th</sup>** in Room F at 9:00 a.m. The weekly deadline for the bulletin is Tuesday at noon.



## New Adult Bible Study

**“A Study of Acts”** – Where the Passion ends, the story of the Apostles begins Sunday Mornings at 10:10 A.M. This bible study and discussion group will focus on the early spread of Christianity, from the streets of Jerusalem to the then seat of world power, Rome, as told through the book of Acts. Beset by violent opposition from without, and in constant turmoil from within, Acts describes the gripping story of the first apostles, lead by Peter and Paul, as they struggle to keep the faith alive. Please join us starting Sept. 18, Room G. Discussion Leaders - Bruce Moss, Dave Drenning.



## F.A.Q.'s about Fall Women's Retreat October 7<sup>th</sup>

**What is the purpose of the retreat?** The number one purpose is for the women of the church to get to know each other.

**What will we do?** The retreat has 3 distinct segments: From 7:00-9:00 Friday night, there will be activities of choice in the new education wing. You may rotate anytime from room to room. Some of the choices are scrap-booking, massages, manicures, a speaker on women's health & nutrition, and possibly scarf-knitting and jazzercise.

Then at 9:00 we will all come together in Fellowship Hall for an interactive experience led by the founder of Prayer in Motion, Janene Ternes. This is a program of worship, movement, and music for ALL ages. In fact, some ladies might decide to come just for this 1 ½ hour not-to-be-missed program. At 10:30 p.m., some folks will go home. But those of us with an undaunted zest for fellowship, fun, & food will return to the new wing to spend the night giggling, eating, playing games, and maybe even sleeping. Bring your own sleeping bag and pillow!

**What will it cost?** No cost is expected; however, some of our service providers may set out a free will donation basket. For those who spend the night, a midnight snack or breakfast dish to pass is requested.

**Can I bring someone who is not a member of FUMC?** Absolutely yes!

**Who do I call for more information?** Margo Perry, 734-223-4216

### SPECIAL EVENING PROGRAM

#### *PRAYING WITH BODY, MIND AND SPIRIT*

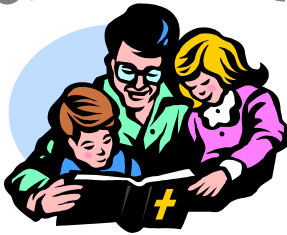
FRIDAY, OCTOBER 7, 2005 9:00-10:30 P.M.

Come experience a new dimension in your personal prayer using your body, mind and spirit to pray with the Scriptures. Deepen your connection with God as you pray through movement, music, and guided meditation. Basic movements will be taught which can be done by anyone, regardless of experience or physical limitation. Whether you stay over night or not, all are invited to relax, unwind and attend the Friday evening program. Contact Margo Perry for more information.



**Facilitator:** **Janene Ternes**, Commissioned Spiritual Director and founder of Prayer in Motion, LLC. Gifted teacher and mentor, Janene has developed and presented a variety of individualized programs which teach and inspire holistic forms of prayer for people of all ages. Her goal is to help others find and achieve their own inner connection with God, leading to a more peaceful, joyful and fulfilled life. For more information, visit her website at [www.prayer-in-motion.com](http://www.prayer-in-motion.com)

# CHILDREN'S MINISTRIES CORNERSTONE



**“And now, O Israel, what does the Lord your God ask of you but to fear the Lord your God, to walk in all his ways, to love him, to serve the Lord your God with all your heart and with all your soul” Deuteronomy 10:12**

What better way to serve our Lord than to serve our own children? GOD’S OVERALL PLAN? The KIDS Church Team has been meeting weekly, and a vision is in place for the KIDS Church ministry. In order to maintain a healthy, age appropriate ministry, our goal is to split up KIDS Church into two groups beginning in January 2006. **KC 1** will be 1<sup>st</sup> and 2<sup>nd</sup> graders and **KC 2** will be 3<sup>rd</sup> and 4<sup>th</sup> graders in the adjacent room, (Room F). With a history of 30 + children in one room ages 5-9, we see a definite and long time need to divide the group to give the children a better quality of ministry. In turn this will allow them to learn in an environment more conducive to not only their age, but their peers as well. **Jesus tells us in Matthew 10:42 “And if anyone gives even a cup of cold water to one of these little ones because he is my disciple, I tell you the truth, he will certainly not lose his reward.”** Giving a cup of water to a child is a good model of unselfish service, as Jesus commands us. Jesus also enjoyed ministering in small groups, spreading the Word of God with His 12 disciples.

As we kick off the Fall ministries, KC coordinators Julie Evans and Shannon Peitz will be busy coordinating all the parents of the children who are involved in KC to volunteer their time once a quarter to help better the KIDS Church Ministry. Required support of teaching and/or leading the KIDS Church ministry during both services will begin so we can indeed offer that cup of water to our children as we strive to make disciples out of them. We are excited to split KC in January, however we cannot do it without the required help of parent volunteers to better the ministry. Help us

to reach our goal for our children and pray that God’s Will be done with KC 1 and KC 2 !

In light of Safe Sanctuaries, this year we will begin with a sign in/out procedure for the Sunday School children (grades 1–4), as well as a sign out procedure for KIDS Church and WEE Worship. We ask that parents take an extra moment to help us better track attendance, as well as ensure the children are released to the proper adult. The children will remain in their classrooms until the parents, in a timely manner, can pick their child up and sign them out. The Sunday School Teaching Team thanks you in advance for your patience and cooperation as we transition into a new way of keeping our children safe.

## FRIENDSHIP MINISTRY



The Friendship Ministry for the differently-able/special need population will be launching this fall with a student and parent/caregiver Open House on September 27, from 6:30-8:00 p.m. We will have two specifically designed full worship programs for children and young adults/adults ages 5 to 95! The Friendship Ministry Program will meet the second and fourth Tuesdays of every month through fall and winter and will include a 60 minute full program for children ages 5-11, and a 90 minute full program for ages 12 and up. Each bi-monthly program will include worship, fellowship, and Bible Study in small groups with friendship friends (mentors) aiding the students within each small group. Please contact Roger Heffelbower (429-7095) or email him at [RU4C@comcast.net](mailto:RU4C@comcast.net) to learn more about this ministry.

## J.O.Y. FELLOWSHIP IS GROWING!

If you are 55 or older, you are invited to join us on the third Thursday of the month for lunch and fellowship at the church. On Thursday, September 18<sup>th</sup>, at 12 noon, our lunch will be pizza and salad. Please R.S.V.P. in the Narthex. Cost is \$5.00 per person. Questions? Please contact Laura Speiran.



## MISSIONARY VISIT

Please join us on **Sunday, September 18 at 7:00 p.m. in the Fellowship Hall** for dessert and coffee with Bryan and Joan Wussow. Bryan and Joan are full time missionaries with Wycliffe Bible Translators. These long time friends of Pastor Jim have served overseas in the South Pacific and combine computer technology skills with artistic gifts to share the scriptures and reach people for God around the world. The Wussows, in addition to sharing their own experiences, will be prepared to discuss some of the many foreign and domestic mission opportunities offered by Wycliffe. Bryan and Joan look forward to meeting with you!

## MUSIC TOGETHER CLASSES



The fall semester of Music Together classes begins on September 20<sup>th</sup> and will again offer the popular Tuesday evening classes in addition to Wednesday and Thursday daytime classes. Music Together is a family program. Siblings attend class together and caregivers are actively involved in class activities in addition to learning basic concepts of childhood music development. Registration for the 9-week semester includes a songbook, CD, and parent guide. Sibling discounts are available. These classes are taught by Angela Schmidt and Nicole Lampman. For more information, please call Angela Schmidt at 429-3385 or visit our new website at [www.HandInHandMT.com](http://www.HandInHandMT.com).

## LIL' SAINTS PRESCHOOL

GOOD NEWS!! Our paper work is officially on the way to the Washtenaw County Licensing Department from Lansing, where we will SOON be assigned a consultant. We are actively seeking and accepting resumes for qualified individuals for the following positions:



- Director/Teacher
- Lead Teacher
- Assistant Teacher

If you have an interest in any of the positions, please send your resume to Leanne Rimnac, Preschool Leadership Team Chairperson, online to [leanne@fumc-saline.org](mailto:leanne@fumc-saline.org), or call her at 429-4730. **The next Lil' SAINTS Preschool Leadership Team Meeting will be held on Tuesday, September 27<sup>th</sup> at 6:30 in Room A.**

## HOMELESS SHELTER COLLECTION

We are collecting **razors** and **shaving cream** during **September** for the Homeless Shelter. These items can be placed in the "blue house" in the Narthex.



## R.O.C.K. in LOGOS SCOOP

The upcoming Leadership Team meeting will be taking place on September 20<sup>th</sup> at 6:30 p.m. in Room A. We'll be kicking off the Fall session on Wednesday the 28<sup>th</sup> !! If you have not registered your child(ren) and have not attended the parent meetings, please contact Bonnie Bennyhoff at 429-5800 for complete registration! If you are interested in volunteering anywhere within this awesome ministry, please let us know! We are currently praying for Bible Time teachers (see Emily Krach), Recreation Helpers (see Kathy Kise), Worship Skills Helpers (see Angela Schmidt) or if you have a knack in the kitchen, please see Deb Walls. If you love children and have a passion to help bring Christ into their lives, this is your opportunity!

## METHODIST MEN'S BREAKFAST



The Men's Group will meet for breakfast, Sunday, September 18<sup>th</sup>, at 7:30 a.m. in the Fellowship Hall. The menu is TBD but will be prepared with love and little regard for Heart Smart. All interested men are invited. The agenda is to organize and work to develop programs of interest for the coming year. Please bring yourself and your ideas to this meeting. We are assured that there are projects waiting for us to tackle. If you have suggestions or questions prior to the breakfast, please contact Le King at 944-9715 or by email [king2009@aol.com](mailto:king2009@aol.com)

## TAILGATE DINNERS IN CHELSEA

The Chelsea Methodist Men's Group will be sponsoring a grilled steak or chicken dinner on Friday, September 30<sup>th</sup> (prior to the Chelsea/Saline football game) at the Chelsea Methodist Church. Cost of dinners is \$10 each and they will be available for pickup between 5:00 and 7:00 p.m. from the Chelsea Church at 128 Park Street in Chelsea. If you are interested, contact Le King for dinner tickets prior to game night.



**5<sup>TH</sup> ANNUAL SALINE  
CROP WALK  
SUNDAY, OCTOBER 2,  
2005**

**SALINE FIRST  
UNITED METHODIST CHURCH**

1:30 pm—Registration~Bring top donation sheet.  
2:00 pm—Opening Prayer & Directions.  
2:10 pm—Walk start time. The walk is three miles.

**Donations: Your choices are:**

1. To bring your envelope with donations to the walk.
2. To give your envelope with donations to your recruiter no later than Monday, October 17, 2005
3. **You must bring the top pledge sheet to the walk!**

**Contributions to CWS provide tools of hope:**

**\$15** can provide struggling farmers in Haiti with a set of garden tools.

**\$30** can put a minefield probe in the hands of a deminer in Cambodia or the Balkans

**\$45** can buy a months supply of oral rehydration therapy for 50 children

**\$100** can purchase the pipe necessary to bring clean water to a village.

**Children are the most vulnerable. Of the 31,000 children under five who die each day in developing nations, half perish from hunger-related causes. That's one child for every breath we take.**

**Please make checks payable to CSW/CROP**

Help us reach our goal of \$15,000 by making sure you collect at least \$100 in pledges. What a difference we can make! Refreshments here at our church afterwards. If you can help.

**CROP POTS FOR C.R.O.P. WALKERS**

FUMC has been making a tradition of serving warm crockpot food to the C.R.O.P. hunger walkers as they come in from the walk. Sign up in the narthex to:

1. Drop off a pot of food
2. Serve & clean up food
3. Help register the walkers prior to the walk, help with set-up, registration or clean-up. Please contact Jacquelyn Macy at 429-3729.

**FALL NEW MEMBER CLASS**

Everyone who is not currently a member here at Saline 1<sup>st</sup> is invited to participate in our Fall New Member Class, **beginning Sunday, September 18** and going through Sunday, October 23<sup>rd</sup>. It will be taught by Pastor Jim and held **during the Sunday School hour, 10:10-11:10 a.m.**

All those who wish to join the church at the end of the class will be received into membership on Sunday, October 30<sup>th</sup> at the 9:00 a.m. worship service. The six classes sound like a lot, but are packed full with time to fellowship with one another, learn about what we do here, as well as examine what it means to give one's life to Christ.

We encourage everyone to go through the class, even if you are transferring from another United Methodist Church. Joining a church is a meaningful step in many people's faith journeys. If you have any questions about whether it is right for you, please come in to speak with Pastor Jim or Laura Speiran. Please join us on September 18<sup>th</sup> in the Fellowship Hall. Is God calling you to a stronger commitment in your faith?



**LET THE MUSIC BEGIN!**

Music programs have resumed their regular schedule on the following days:

**Wednesdays - Praise Team** at 6:30 p.m.

(Tammy Schoenfeldt, Director)

**Thursdays – Orchestra** at 6:15 p.m.

(Dick Schoenfeldt, Director)

**Chancel Choir** at 7:30 p.m.

(Tammy S. and Linda Klepaczyk, Directors)

**Adult Handbells** at 7:30 p.m.

(Nate Lampman, Director)

New members are welcome (old members are welcome too!). Don't be afraid to give it a try. Come for the music and stay for the fellowship. For more information or questions, contact Tammy Schoenfeldt at 429-7269.

# INFUSION YOUTH NEWS!!

## Senior High

**Come Join us at Youth Group** – Wild Worship Wednesday is off to a great start for the school year! Come join us every Wednesday from 8 – 9:30 p.m. for Worship, Food, Fellowship and Discussion about real life issues. Right now we're talking about the "Battleground" – Come check it out!

Join an LT Group! **Life Together (LT) Groups** are a place for you to experience new depth in your relationship with Jesus Christ while developing authenticity in your friendships with other Christians. LT Groups will be held every Sunday night at Emily's Place starting October 2<sup>nd</sup>, 4:00 – 6:00 p.m. with a group dinner to end our night together! Sign up to be in a group by filling out the info attached to the yellow flyer in the basement!

### Fall Rummage Sale

Sign up to set-up & sort September 19<sup>th</sup> – 23<sup>rd</sup>. THE SALE is on September 24<sup>th</sup>, 7:30 a.m. – 1:00 p.m. with clean-up until 3:00 p.m.



## Junior High

**Come Join us at Youth Group** – Junior High Youth meets on Sunday Evenings from 6:30 – 8:00 p.m. for an awesome night of games, food, worship, and discussion about real life issues. Come check it out!

**R.O.C.K. in LOGOS** starts on September 28<sup>th</sup> and has new stuff going on just for you! Dinner starts at 5:30 p.m. and runs until 6:30 p.m., Worship Skills is from 6:30 – 7:00 p.m., and Confirmation and LT groups for 8<sup>th</sup> graders runs from 7:00 – 8:00 p.m. Come join us for an entire night of fun, worship, and fellowship! Get registered by September 18<sup>th</sup> by filling out a registration form.

**Fall Corn Maze** – Sunday, September 25<sup>th</sup> we will be venturing out of the church and navigating our way through a corn maze at Talladay Farms in Milan!! Bring a friend and \$5. We will not be done until 8:30 p.m. Make sure to bring your flashlight! If you are a parent and would be willing to join us in the fun talk to Emily!



## Confirmation Class to Start this Month!

Confirmation class for all 7<sup>th</sup> graders or older begins Wednesday, September 21<sup>st</sup> with a meeting for parents & students. Confirmation will meet every Wednesday in the Junior High Room from 7:00-8:00 p.m. and runs through the end of May. If you have not registered please talk to Emily right away so we can be expecting you!

Any Questions? Please talk to Emily Krach,  
Director of Youth Ministries.

## Youth!! Parents of Youth!!

**Start the School Year Right with INFUSION**  
**– Junior and Senior High Youth Ministry!**

**PARENTS!!** YOU are extremely important to the health of our youth ministries! Please join us for an important information meeting and feedback time to start off a new year of student ministries! There will be PIZZA....seems to work for the youth!!

**Senior High Parents** – Sunday, September 18<sup>th</sup> after Second Service @ 12:30 p.m.

**Junior High Parents** – Sunday, September 25<sup>th</sup> after Second Service @ 12:30 p.m.

**Any Youth Ministry Questions? Contact Emily Krach, 429-4730 /e-mail [Krachem@hotmail.com](mailto:Krachem@hotmail.com)**

## MEIJER COMMUNITY REWARDS PROGRAM

The Church Council has approved the implementation of the Meijer Community Rewards program as a fund raising activity to benefit our *Missions* and *R.O.C.K. in LOGOS* ministries. The Community Rewards program allows Meijer customers to earn rewards, based on their purchases, and designate non-profit organizations as recipients of the rewards. Meijer offers this program as a means of returning part of their profits to the communities they serve. The Church Council views this as an exceptional opportunity for funding our growing programs and we encourage our members to participate in the program. Please pick-up an information form in the Narthex. Contact Dale Adkins or the church office with any questions you may have.



## KATRINA DISASTER RELIEF

### FINDING HOPE IN THE MIDST OF DESPAIR

After describing the complete destruction of Jerusalem and the despair of homelessness, the author of Lamentations writes, *“But this I call to mind, and therefore I have hope: The steadfast love of the Lord never ceases, his mercies never come to an end” (Lam. 3:21-22)*. In all circumstances the love of God is steadfast. This is the source of our Christian hope. In these days of uncertainty following the wide-spread devastation caused by Hurricane Katrina, we are called to be living examples of God’s love and to provide a source of hope for so many experiencing seemingly hopeless situations.

### How UMCOR is Giving Hope to Thousands Seeking out and helping the most vulnerable.

UMCOR is committed to helping the most vulnerable people affected by Hurricane Katrina. “As the media focuses on the major metropolitan areas affected by Katrina, UMCOR will be focusing on its mission to seek out the people left most vulnerable by the storm who often live in outlying rural areas,” says UMCOR Disaster Response executive, Tom Hazelwood. “We seek to help people who might be otherwise overlooked.”

### Responding with knowledge that comes through experience.

Through local United Methodist churches and trained disaster workers, UMCOR provides immediate relief. UMCOR will bring its years of experience, capable volunteers and creativity to the rebuilding of communities devastated by Hurricane Katrina.

### Looking ahead to long-term recovery.

UMCOR’s main focus in any disaster is the long-term rebuilding process. Recovery from devastating storms may take up to five years – well after the media have stopped paying attention.

### How You Can Help

Your generous gift to **UMCOR Advance #982523, Hurricanes 2005 Global**, will help those affected by Hurricane Katrina. You can help by donating online at [www.methodistrelief.org](http://www.methodistrelief.org), or by phone at 1-800-554-8583.

In the Narthex are instructions for **Health Kits** (approximate cost of \$12) and other items needed, please pick up bags and lists and return by Sunday, September 18. Thank you!

## HURRICANE RELIEF

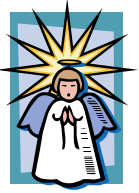
In this time of tragedy, we all want to help. If you want to assist with the national relief effort, you can send money to the American Red Cross <https://donate.msn.com/pages/landing.html>. The community of Saline has come together to coordinate efforts to assist in the rebuilding of homes and lives. We are currently planning to work with Habitat for Humanity to provide housing and we are currently accepting financial donations payable to the Friends of the Saline Area Fire Department. If you are interested in providing assistance with this effort, please contact Kathy Roth at 646-9140 or email [kroth01@comcast.net](mailto:kroth01@comcast.net), or you may fill out our online form at <http://www.zoomerang.com/survey.zgi?p=WEB224LUQ2BA3Y>. Thank you!!

### RAISE A CUP OF TEA FOR HOPE!

Ladies, please plan to attend a Tea to benefit Hope Clinic on Sunday, September 25, 2005 from 2:00 to 4:00 p.m. at the Ladies Literary Club in Ypsilanti. We invite you to wear vintage (or your favorite) hats to make the afternoon even more festive. There is no charge, however you are encouraged to bring new or collectable items that can be used to create gift baskets for the Harvest For Hope Gala auction or gift certificates that can be incorporated into the basket themes. Some suggested basket themes are: U of M, EMU, Gardening, Music Lover, Christmas, Coffee Lover, Family Fun Night, Book Lover, Cooking with Kids, “Pamper Yourself”. For additional information or to place your name on the invitation list, please contact Judy Tice at Hope Center, 734-961-0548 or [jtice@thehopeclinic.org](mailto:jtice@thehopeclinic.org). Please join us....good food, good fellowship, good cause equals a very good time.

**Help Wanted:** Hope Clinic currently has three paid positions open. They include an Administrative Assistant 28 hours per week who possesses good organizational skills, strong people skills and some computer knowledge; experience with Word and Excel a plus. We have an opening for an RN 20 hours per week to help Medical Clinic patients with access to medications and other needed help. We are seeking an IT Manager to work 20 hours per week developing an organization-wide database and to help with technology issues. To apply, please email your resume to [jhorak@thehopeclinic.org](mailto:jhorak@thehopeclinic.org) with the position you are seeking in the subject line. Or mail resume to Jean Horak, Hope Clinic, P.O. Box 980311, Ypsilanti, MI, 48198.





## CHILDREN'S CHRISTMAS SERVICE

Preparations are underway for the annual Children's Christmas service to be held Sunday, December 4, 2005 at the 11:15 a.m. service. Please mark your calendars to save this date and time for this very special worship event.

Parents, children involved in this year's service will only include all children enrolled in the fall R.O.C.K. in LOGOS program and Sunday School children in grades preschool through 2nd grade. All children involved in the service will be expected to attend a very important rehearsal on Saturday, December 3rd from 9 a.m. to 12 p.m. If you have questions, please call Angela Schmidt at 429-3385.

# Thank You!

I want to thank everyone for their visits, phone calls, cards and prayers. I'm now home in a body cast and doing well.  
Shirley Riggs

Your love to us has been overwhelming. We have received 173 cards, each filled with loving stories of lives we have touched. Every night we have been sitting reading cards. This is more fun than a roller coaster ride! Our ministry started in 1966 in Ellicottville, NY. You know that was just yesterday! Keep up the good work in the church. Jim will keep on preaching. I will keep on singing and teaching Sunday School. Thank you for the biggest birthday party Jim has ever had!

Love, Linda, Julie, & Laurie Tuttle

I am coming along good now, so I hope we can get to church soon. Thanks to Betty Charles, who brought the CD machine as we didn't have one and we certainly enjoy listening to the services on it! She also has offered us transportation, as neither Wallace nor Helen can drive for now! God bless all for the wonderful services. Thanks to Laura Speiran, Parish Visitor. She is a wonderful person to have in the field. By the time she left her visit with us, it felt like we really got to know her. Thanks, Laura, for being so thoughtful and kind!

Helen Seitz

## SAFE SANCTUARIES

Yes, it is Fall and the start-up for all of the activities that go along with the change of the season. The start of school, soccer, Sunday School, and scout troop meetings translates into LOTS of forms to be filled out by parents! If you are a volunteer with any of the ministries at FUMC of Saline that involve children, youth, or vulnerable adults, you also have been given a form to complete. The Volunteer Information Packet is the first component is the screening process developed by the Safe Sanctuaries Task Force. This form is designed to provide the church not only with background information, but also valuable input about your interests and passions that will help us to guide you to the ministry where your gifts will best serve the Lord. A second component will be a check of personal references. Thirdly, an interview if the staff person responsible for that ministry deems it necessary. Last, a criminal background check will be performed on all persons working with children, youth, or vulnerable adults. This screening process will be used with all current and future paid and volunteer persons involved in these ministries.

The screening process is occasionally met with questions about why the church needs the information, what happens to it, and who has access to it. The Council, members, and staff of FUMC of Saline are committed to creating and maintaining an environment in which children, youth, and vulnerable adults are protected from physical, emotional, and sexual abuse, and in which church staff and volunteers are protected from potential false allegations of abuse. All volunteer information forms, reference forms, and criminal background check forms will be seen ONLY by the staff person responsible for that particular ministry. These forms will be kept in a locked file that will be kept in Pastor Tuttle's office. The church cannot destroy these forms after their initial use as they would be necessary if an allegation is forged against a staff member or volunteer.

We must remember that God calls us to make our churches safe sanctuaries where our children, youth, and vulnerable adults can safely grow in their walk with the Lord. At the same time, we also need to protect the adults who are guiding them. If anyone has any questions about this policy, please direct them to Melissa Zimmerman at 913-6911.

**FALL 2005**  
**ADULT SUNDAY SCHOOL CLASSES**  
**BEGINNING SEPTEMBER 18**

**The Study of Acts**

Where the Passion ends, the story of the apostles begins.

**The Promised Land**

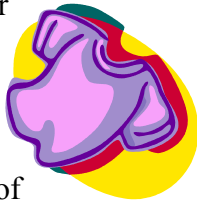
First in the dramatic video series hosted by historian and scholar, Ray Vander Laan, filmed in Israel.

**The Life and Ministries of Jesus**

A continuation of the exciting and dynamic Ray Vander Laan series.

**NEW SALINE FUMC LOGO SHIRTS!**

ON SALE NOW! See the shirt order forms in the Narthex. This 2<sup>nd</sup> annual R.O.C.K. in LOGOS fundraiser will not only support the ministry, but will also bring awareness around the community of what a mission oriented congregation we are in His Name! Shirts will be on sale thru September! Call Leanne Rinnac if you have any questions!



**FALL WORSHIP SCHEDULE**

9:00 a.m. – Traditional Worship

10:10 a.m. – Sunday School (begins Sept. 18)

11:15 a.m. – Crossroads Contemporary Service

**Fall Office Hours**

9:00 a.m. – 5:00 p.m.



**PRAYER CONCERNS** ~ Katie White; Kathy Richmond; Judy Bateman; Heather & Jordan Gray; Don & Mary O'Connell; Sharon Abel's granddaughter, Hannah; Carole Smith; Marsha Gilbert; James Johnson & family; Anna Reese; Bret James; Bill & Karen Wenk; Paulette Suchy; Tim McCracken; family & friends of Tawny Dahring; Evelyn Hawkin's daughter, Rhonda; Judy Bateman's uncle, Dennis; Helen Law; Agnes Frost; Linda Bush; for those affected by Hurricane Katrina. **PRAISE/CELEBRATIONS** ~ to Dale & Shirley Padding on the birth of their first grandchild, Blair Rose McGinnis; for Fred Sundling's return home after hip surgery; for a successful week serving meals at the Saline Fair.

**Military personnel and families to keep in our prayers** ~ Jon Komarmy, son of Linda & Mitch Komarmy; Billy Kirkland, son of Kathy & Bill Kirkland; J.T. St. Denis, nephew of Kathy & Bill Kirkland; Robert Rodriguez, grandson of Florence Belt; Bennett Phipps, brother of Rachel Wislocki; Bill Paul, nephew of Bonnie & Tom Riggs; Roman Kisz, grandson of Lil Vaughan & nephew of Karen Sipos; Timothy & Jeffrey Frisbee, grandsons of Florence & Ernie Busch; Nick Gilveli, grandson of Martha Gilveli; Kevin Raymond, son of Susan Raymond; Bret Harbison, nephew of Maxine & Jim Bowker; Abby Suchy, daughter of Paulette & Mike Suchy; Tim Jones, son of Penny & Doug Jones; Kenita Bauerle, friend of Linda Ressler; Dan Erlwein, friend of Dave & Susan Hares; Sam Spicer, grandson of Lois Royal; Erik Maddock, son of Don & Andrea Maddock.

**OUR SYMPATHIES TO** ~ Carlos & Lisa Marshall on the loss of his sister, Sue.

**Goodbye**

A fond farewell to Sally & Ralph Pitzer who will be moving to Florida on Thursday, September 22<sup>nd</sup>. Ralph and Sally have been an integral part of our congregation and have been involved extensively in the ministries and committees of our church. We will truly miss you! The Pitzer's new address and phone number are:

920 Indian River Road, St. Augustine, FL 32092  
904-940-7288

**Ann Arbor Christian Concerts**

presents

**"Michael Card - Live in Concert"**

Saturday, October 1, 2005 - 7:00 PM

Performing Arts Center

Saline High School

Information & Tickets @

<http://a2c2.home.comcast.net/a2c2.html>